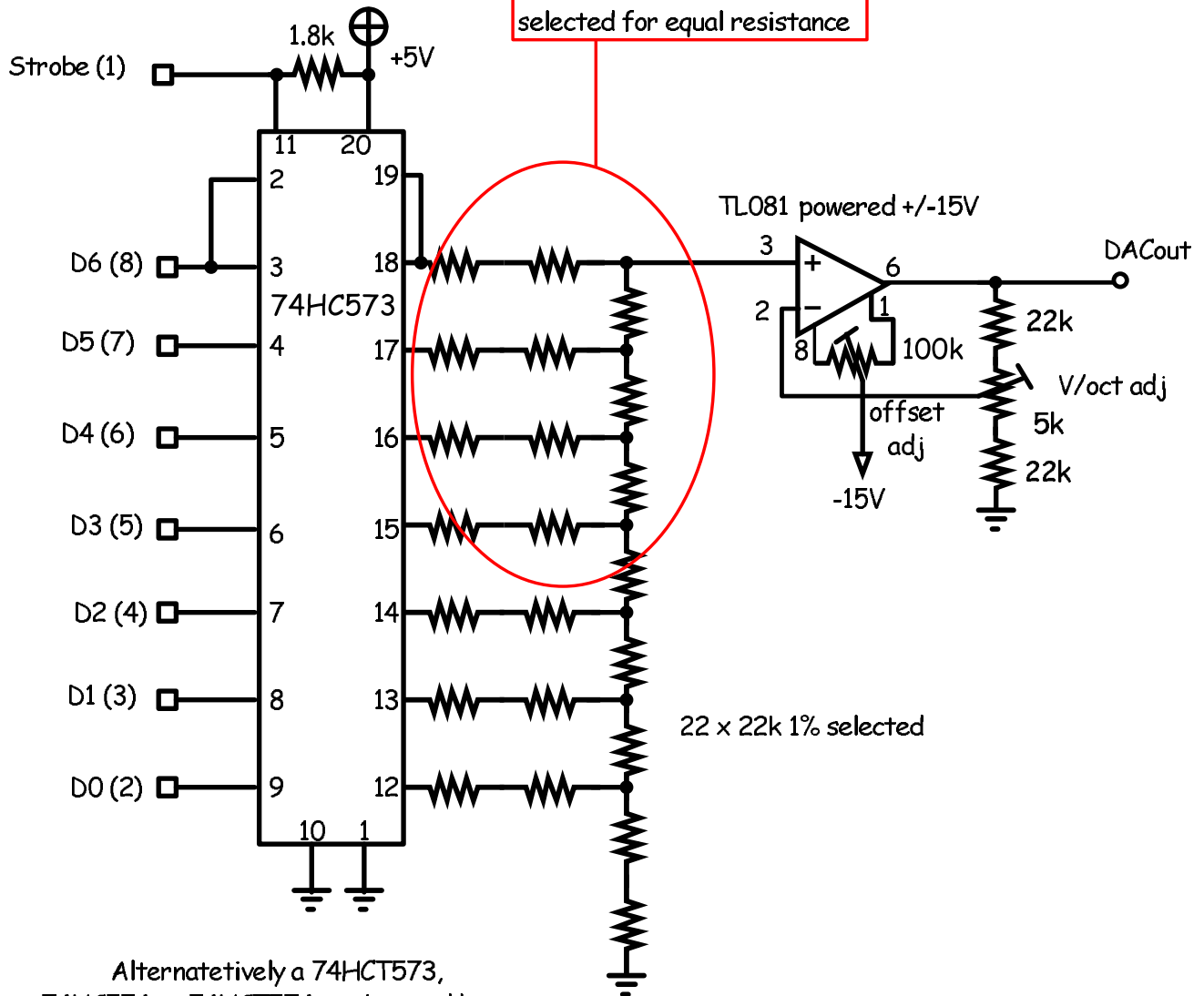
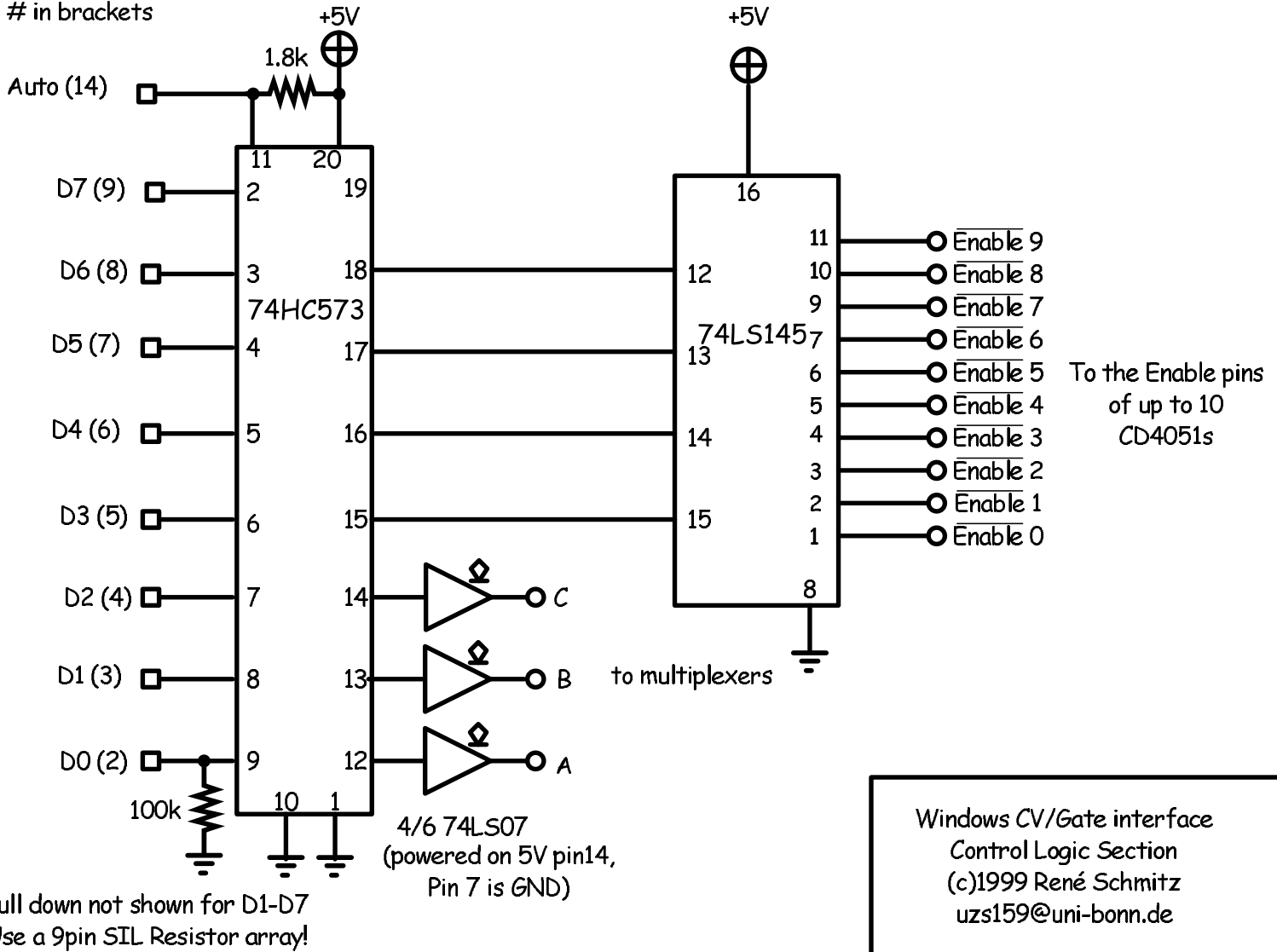


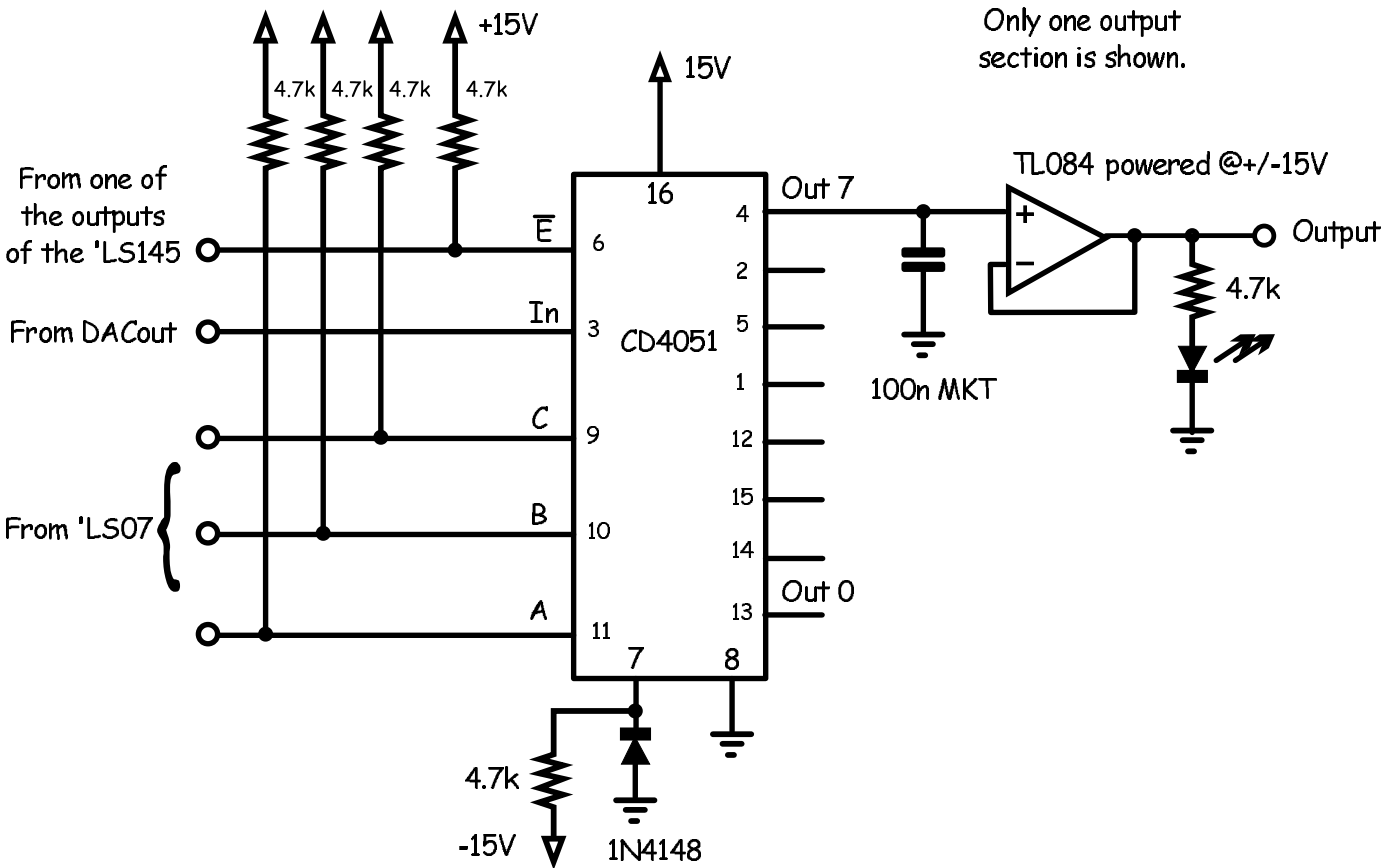
from printer port
pin # in brackets



from printer port
pin # in brackets



The three pullups for A,B,C only need to be at the first 4051, they must be left out at the second, third... ..



Only one output section is shown.

Note: This section can be copied up to 10 times. Providing 80 Outputs.

The A,B & C lines are bussed to all 4051s. The Enable line goes from one 4051 to one output of the 'LS145

Windows CV/Gate interface
Multiplexer/Output Section
(c)1999 René Schmitz
uzs159@uni-bonn.de